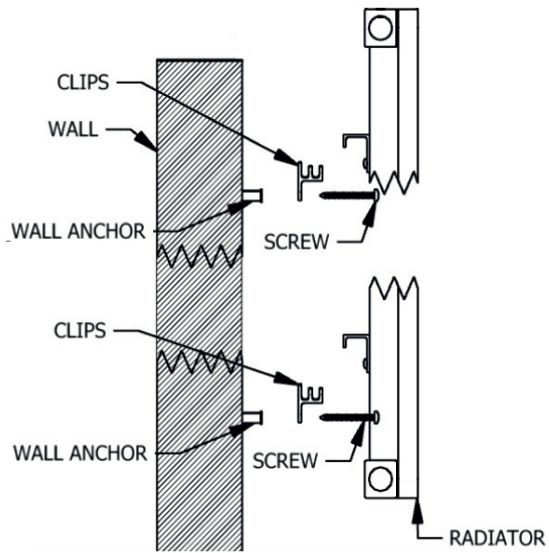
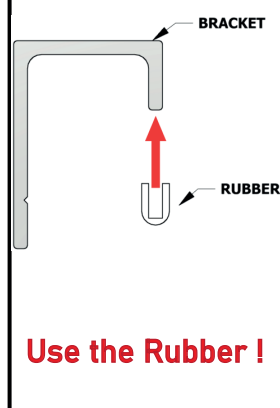
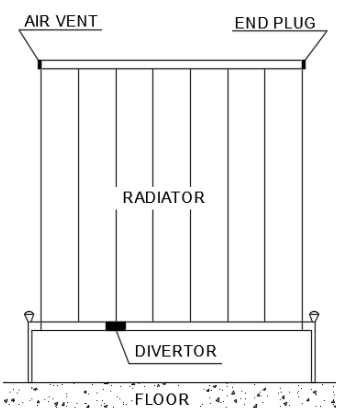
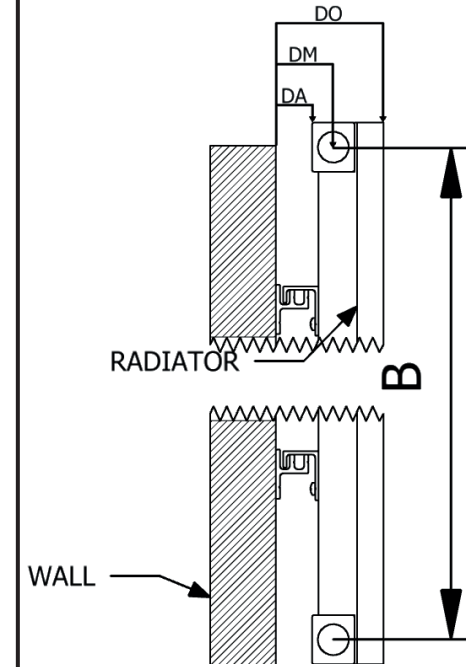
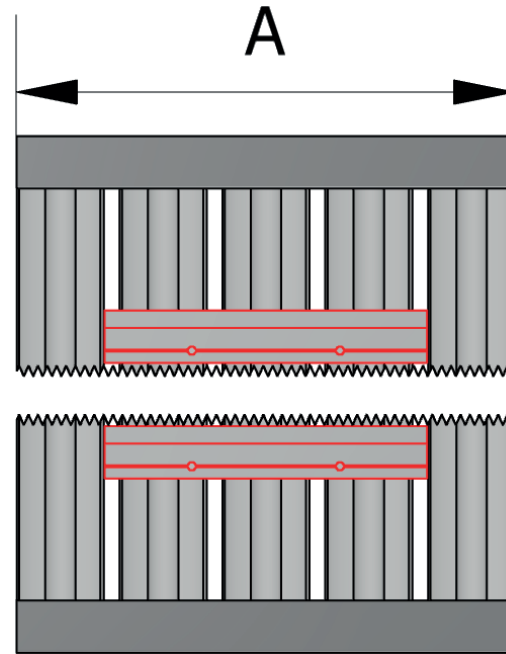


# NEVAL INSTALLATION GUIDE

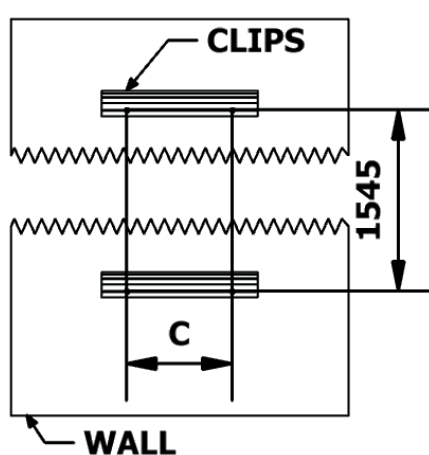
This product must be fitted only by a fully qualified installer.



CLIPS 2 PCS	
WALL ANCHORS 4 PCS	
FIXING SCREWS 4 PCS	
CAP 2 PCS	
END PLUG 1 PCS	
AIR VENT 1 PCS	
RUBBER 2 PCS	



**Use the Rubber !**



NAMES	A	B	C	TUBE QTY	DA	DM	DO	
NEVAL (SINGLE)	1800	286	1745	125	5	22	35	73
NEVAL (SINGLE)	1800	345	1745	125	6	22	35	73
NEVAL (SINGLE)	1800	404	1745	125	7	22	35	73
NEVAL (SINGLE)	1800	463	1745	125	8	22	35	73
NEVAL (SINGLE)	1800	522	1745	125	9	22	35	73
NEVAL (DOUBLE)	1800	286	1745	125	5	26	65	103
NEVAL (DOUBLE)	1800	345	1745	125	6	26	65	103
NEVAL (DOUBLE)	1800	404	1745	125	7	26	65	103
NEVAL (DOUBLE)	1800	463	1745	125	8	26	65	103
NEVAL (DOUBLE)	1800	522	1745	125	9	26	65	103

## GENERAL RECOMMENDATION

- Before fitting the radiator it is necessary to wash out the heating system to remove any existing mud, scale, work residues, traces of flux, oil, etc.
- When the system water pH is outside the 8,5-5,5 range and/or when the dissolved is above 0,1mg/liter, it is always needed to protect the heating system components (the radiator is one of these) with a proper chemical treatment compatible with all parts in contact with water (silicon rubber too).
- In order to fit the radiator to the wall, it is necessary to choose the proper fixings for the wall material.
- If the system water exceeds 50C, please install a warning mark near the radiator to avoid any accidental scalding.
- Clean the radiator surface only with a soft cloth to avoid scratching the finish and do not use chemical againts during cleaning operations. It is prohibited to climb onthe radiator.
- Maximum working temperature 95C, maximum working pressure 4 bar.