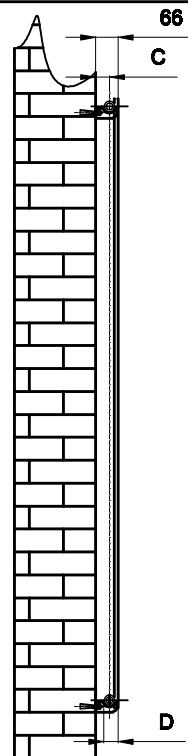
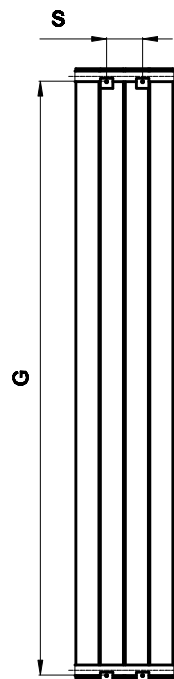


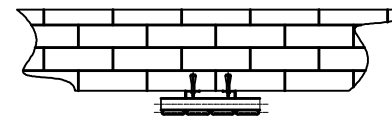
Front View



Side View



Back View



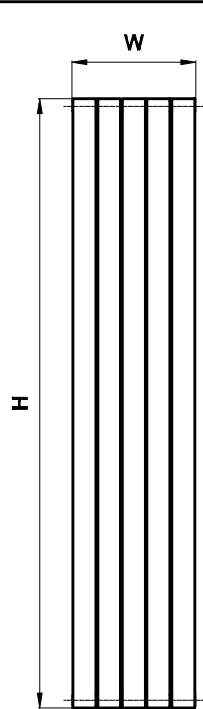
Top view

SUPPLIED INSTALLATION ACCESSORIES

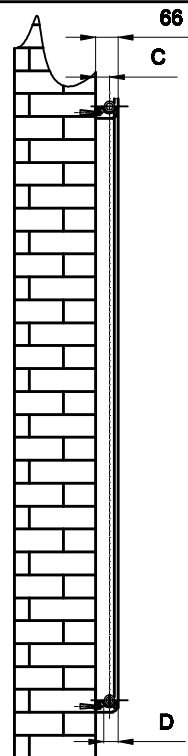
- X4 — X8 ○ X2
- ⌋ X4 ● X1 ○ X1

-Vertical Mounting
-Optional Color Selection
-Max Operational Pressure:6Bar
-Inlet/Outlet:1/2"Female Pipe Thread
-All Dimensions are in mm

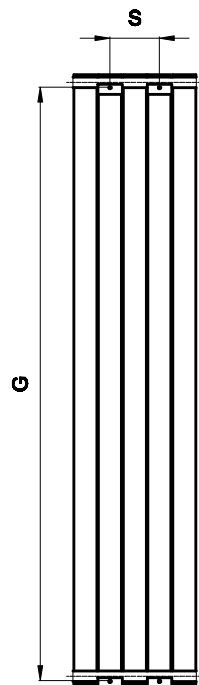
Product Code	Product Name	pipe number	Height	Width	Thickness	hanger Axis Horizontal	hanger Axis vertical	Wall to pipe center distance	Empty Weight	Water volume
			H mm	W mm	D mm	S mm	G mm	C mm	- kg	- l
RND-FL163A	FLAT	3	1600	218	46	33	1555	40	9	3.14
RND-FL164A	FLAT	4	1600	292	46	106	1555	40	12.0	4.18
RND-FL183A	FLAT	3	1800	218	46	33	1755	40	10.1	3.49
RND-FL184A	FLAT	4	1800	292	46	106	1755	40	13.5	4.65



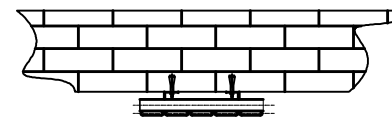
Front View



Side View



Back View



Top view

SUPPLIED INSTALLATION ACCESSORIES

- X4 — X8 ○ X2
- ⌋ X4 ● X1 ○ X1

-Vertical Mounting
-Optional Color Selection
-Max Operational Pressure:6Bar
-Inlet/Outlet:1/2"Female Pipe Thread
-All Dimensions are in mm

Product Code	Product Name	pipe number	Height	Width	Thickndes	hanger Axes Horizontal	hanger Axes vertical	Wall to pipe center distance	Empty Weight	Water volume
			H mm	W mm	D mm	S mm	G mm	C mm	- kg	- l
RND-FL165A	FLAT	5	1600	366	46	146	1555	40	15.0	5.25
RND-FL166A	FLAT	6	1600	440	46	219	1555	40	18.0	6.28
RND-FL167A	FLAT	7	1600	514	46	292	1555	40	21.0	7.35
RND-FL185A	FLAT	5	1800	366	46	146	1755	40	16.9	5.84
RND-FL186A	FLAT	6	1800	440	46	219	1755	40	20.2	6.98
RND-FL187A	FLAT	7	1800	514	46	292	1755	40	23.6	8.17