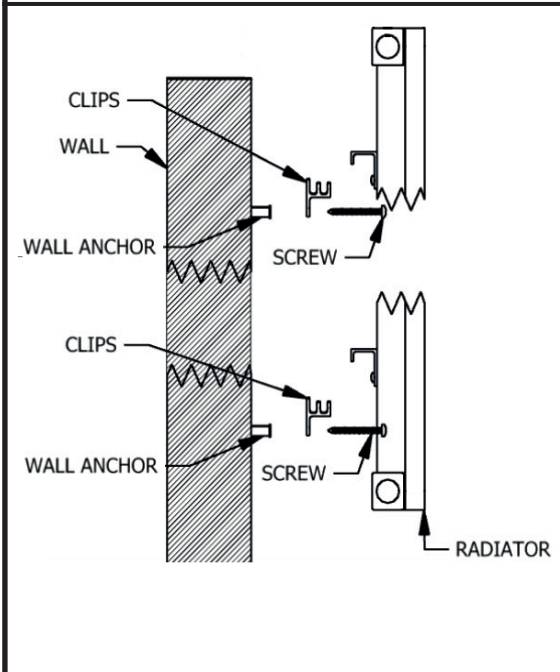
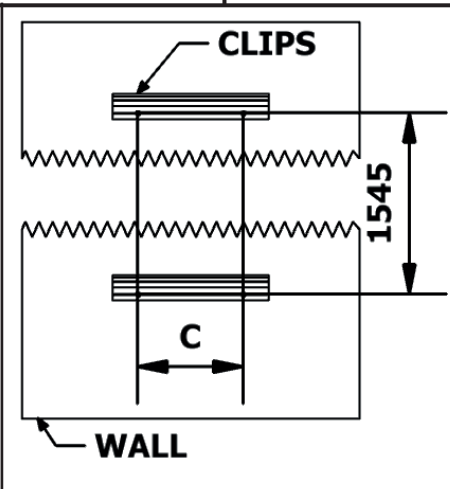
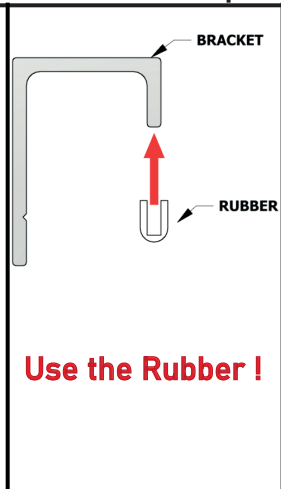
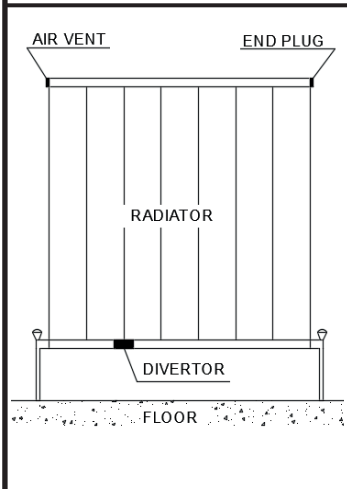
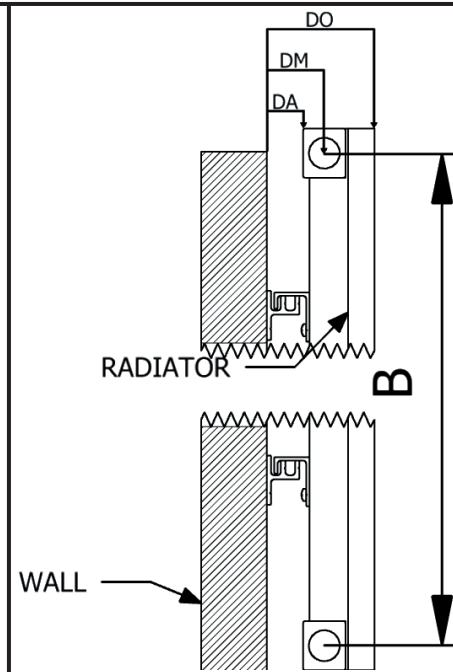
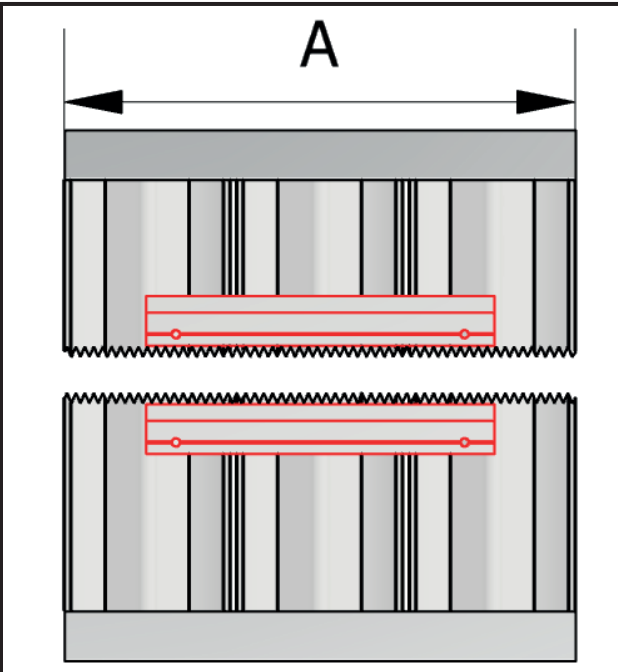


BELVA INSTALLATION GUIDE

This product must be fitted only by a fully qualified installer.



CLIPS 2 PCS	
WALL ANCHORS 4 PCS	
FIXING SCREWS 4 PCS	
CAP 2 PCS	
END PLUG 1 PCS	
AIR VENT 1 PCS	
RUBBER 2 PCS	



NAMES		A	B	C	TUBE QTY	DA	DM	DO
BELVA (SINGLE)	1800	308	1745	150	3	22	35	69
BELVA (SINGLE)	1800	412	1745	150	4	22	35	69
BELVA (SINGLE)	1800	516	1745	125	5	22	35	69
BELVA (DOUBLE)	1800	308	1745	150	3	26	60	94
BELVA (DOUBLE)	1800	412	1745	150	4	26	60	94
BELVA (DOUBLE)	1800	516	1745	125	5	26	60	94

GENERAL RECOMMENDATION

- Before fitting the radiator it is necessary to wash out the heating system to remove any existing mud, scale, work residues, traces of flux, oil, etc.
- When the system water pH is outside the 8,5-5,5 range and/or when the dissolved is above 0,1mg/liter, it is always needed to protect the heating system components (the radiator is one of these) with a proper chemical treatment compatible with all parts in contact with water (silicon rubber too).
- In order to fit the radiator to the wall, it is necessary to choose the proper fixings for the wall material.
- If the system water exceeds 50C, please install a warning mark near the radiator to avoid any accidental scalding.
- Clean the radiator surface only with a soft cloth to avoid scratching the finish and do not use chemical againts during cleaning operations. It is prohibited to climb onthe radiator.
- Maximum working temperature 95C, maximum working pressure 4 bar.