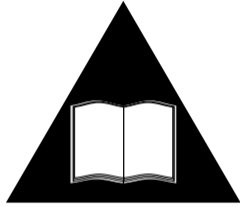


HGT electric heater with capillary temperature regulator



**Please read the instructions
before use.**

HHGTUK1712

The heater complies with EC standards



IP54

SAFETY

1. The heater should be installed by a qualified person.
2. Bathroom radiators fitted with electric heaters should be fixed not less than 60 cm from a bath, shower or wash basin, and never above a bath.
3. This equipment requires RCD protection with rated residual operating current not exceeding 30mA.
4. This equipment must be connected to circuit protective conductor (earth).
5. For the heater permanently connected (hard wire) there must be applied a cut-off device from the mains. Such a device must discon-

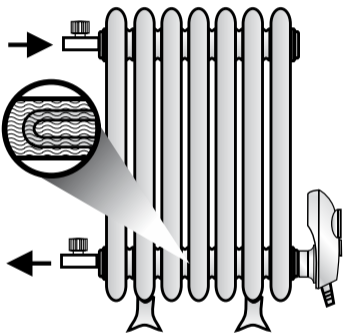
- nect the heater from the supply mains in 2 poles, with contact separation of at least 3 mm.
6. This appliance can be used by children aged from 8 years and above and persons with reduced physical, sensory or mental capabilities or lack of experience and knowledge if they have been given supervision or instruction concerning use of the appliance in a safe way and understand the hazards involved.
 7. Children shall not play with the appliance.
 8. Cleaning and user maintenance shall not be made by children without supervision.

HGT electric heaters are designed for use in water, water/glycol filled column and aluminium radiators
For aluminium radiators please use a water content (instead of radiator's output)

| Water content [l] | | Radiator output [W] | | Recommended HGT Heater | | Flange |
|-------------------|------|---------------------|------|------------------------|--------------------------------|--------|
| | | min. | max. | HGT heater output [W] | Length of heating element [mm] | |
| 1,5 | 3,0 | 350 | 350 | 300 | 340 | R 1/2" |
| 3,0 | 4,5 | 350 | 550 | 600 | 390 | R 1/2" |
| 4,5 | 7,5 | 500 | 850 | 900 | 440 | R 1/2" |
| 7,5 | 8,5 | 700 | 1050 | 1200 | 470 | R 1/2" |
| 8,5 | 10,0 | 900 | 1300 | 1500 | 520 | R 3/4" |
| 10,0 | 18,0 | 1050 | 1800 | 2000 | 570 | R 3/4" |

Installation and structure

I radiator in CH system



I radiator in CH system

Open valves and vent the radiator.

Next close inlet valve
(*thermostatic controller*).

Caution! Only one valve must be closed.

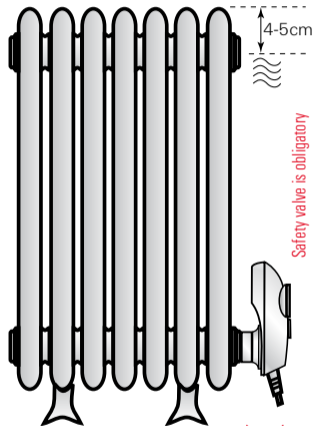
II electric radiator

It is recommended to fill the radiator
only up to 95% of its capacity
(*leave 4-5cm of air in the manifold*),
taking into account thermal
expansion of water.

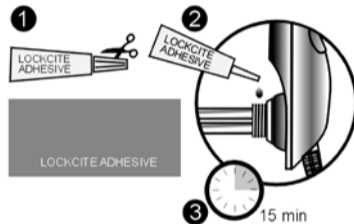
Check the capacity in the instruction
manual of the radiator manufacturer.

**Check that the radiator is
watertight after filling.**

II electric radiator



Because of the shape of HGT heater casing,
with some aluminium and brass
radiators it may be necessary to use
a spacer bush to permit the heater
to be turned fully into position.

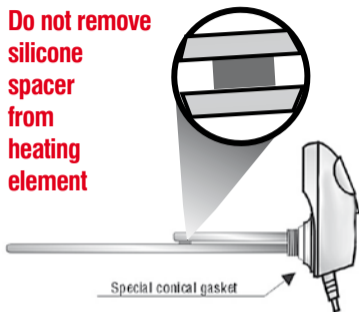


Before inserting the HGT heater into the
radiator, a small amount of Loctite Adhesive
(*included*) should be smeared over half of
the circumference of the thread. **DO NOT
put Loctite on the conical gasket, AVOID
CONTACT WITH THE SKIN.**

The Loctite adhesive bonds within 15 min.

Installation and structure

Do not remove silicone spacer from heating element

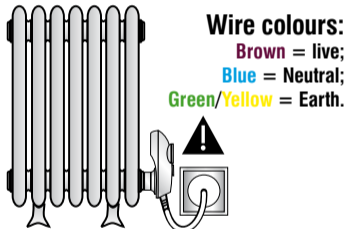


After placing the adhesive on the thread the HGT heater should be firmly screwed into the radiator by hand.

No special tools are required.

The special conical gasket fitted to the 1/2" or 3/4" connection of the heater enables the heater to be screwed into the radiator until the control box is vertical.

Electrical installation in a bathroom should be entrusted to a qualified electrician for hard wiring in compliance with UK electrical regulations. This equipment requires RCD protection with rated residual operating current not exceeding 30mA.



Wire colours:

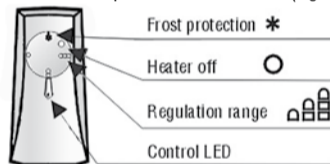
Brown = live;

Blue = Neutral;

Green/Yellow = Earth.

Connect the heater to the mains 230V.

The HGT heater is switched on by turning the control knob clockwise, and the LED on the casing will light up. The star shaped position on the control knob is for frost protection (approx. 10°C). The range of temperature regulation is from 20°C to 65°C ($\pm 5^\circ\text{C}$). The heater is turned off by turning the control knob as far as possible anticlockwise (Fig. 1)



Maintenance:

The HGT heater **MUST BE DISCONNECTED** before cleaning the casing. The casing may be cleaned using a soft cleaning agent on a damp cloth.

AVOID SOAKING THE CASING.

The heating element must be fully immersed. The radiator should be fully purged of air

GUARANTEE TERMS:

Guarantee is granted by manufacturer for 24 months period starting from date of sale, but no longer than 36 months from date of the heater manufacture. Defects revealed within this period, resulting from a fault of manufacturer will be repaired free of charge or the item replaced with new, equivalent one. Term of complaints' investigation up to 14 (fourteen) days from date of submission to the manufacturer.

Guarantee does not cover:

1. Using of product in a manner incompliant with attached instructions.
2. Any visible damage to the heating element or controller due to improper use.

Damaging of manufacturer's seals makes the guarantee null and void.

Guarantee conditions and card

In the event that Heatpol are unable to repair or replace this product we reserve the right to refund the purchase price as an alternative

GUARANTEE CARD

Electric heater with electronic temperature controller, type: HGT

Serial No.:

Date of sale:

.....
Stamp of retail outlet, signature of seller

Caution:

The guarantee card should be legibly filled in retail outlet. Any corrections on the guarantee card will invalidate the guarantee. Guarantee card valid only with proof of purchase.

Notes:

1. The condition of proper, long-term heater operation is complete immersion of heating element in water.
2. It is recommended to entrust the heater installation and first starting to **qualified technician**.
3. In case the radiator installed in CH system is fitted with two valves, it must not be closed both at supply and return side (thermal expansion of water).
4. Disconnect the power supply in case malfunction is found.
5. Electric power cable is not replaceable. Y type connection. If the electric cable is damaged the heater must be returned to the manufacturer for repair.
6. If heater doesn't work at any position of a knob please return it to a sale point.

Caution:

To avoid the risk of fire or electric shock the heater casing should be protected from water spray or flooding.

This appliance is not intended for use by persons (including children) of limited physical, sensory or mental abilities, or persons inexperienced or not familiar with the appliance, unless supervised or instructed on the appliance use by persons responsible for their safety. Particular attention should be paid to children, to preclude playing with the appliance by them.



exclamation mark on triangular field signals information important for the user



lightning mark ended with arrow on triangular field warns about dangerous voltage inside the appliance

CAUTION

electric shock hazard

Note:

in order to reduce electric shock hazard, do not remove the casing (nor its rear cover).

There are no user-serviceable parts inside the appliance; the product should be returned to manufacturer to have it repaired, via product purchase point.

REFER TO LABELS ON ENCLOSURE



Do not throw the used appliance in the waste bin. Take it to a recycling facility.